



WRASSE IDENTIFICATION CARD



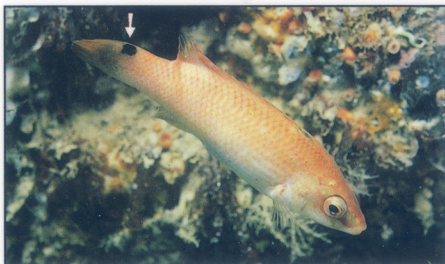
An arrow symbol (→) in the text refers to distinguishing features on the corresponding photograph(s)

Photographic Acknowledgements: Rock cook, Goldsinny, Cuckoo and Ballan (Bernard Picton). Corkwing (Peter Scones, Planet Earth Pictures Ltd.).

Produced by An Bord Iascaigh Mhara, in association with the Environmental Sciences Unit, Trinity College, Dublin.

Further enquiries to: The Aquaculture Technical Section, An Bord Iascaigh Mhara, P.O. Box 12, Crofton Road, Dun Laoghaire, Co. Dublin, Ireland. Tel: 2841544 Fax: 2841123

Copyright © 1991 .B.I.M.



GOLDSINNY

Conspicuous black spot on top of base of tail (→). Less visible black spot on the dorsal fin. Body is green to gold in colour.

BOD GORM



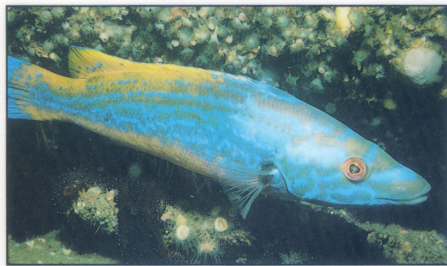
ROCK COOK

Dark band across tail (→). Small-mouth. Five hard spines on anal fin (three in other species). Body colour green to brown, with a bright blue colour on the head (especially in males).



CORKWING

Dark spot in centre of base of tail (→). Black spot behind the eye (→). Body colour variable, mottled brown, sometimes with dark bands. Males have bright blue and red lines across the head. Females have a conspicuous, purple, genital papilla.



CUCKOO

Both male ♂ and female ♀ with pronounced, pointed snout, and unmistakable colours; bright blue and yellow stripes in the male and black and white spots on the back of the female.



BALLACH MUIRE



BALLAN

Larger ballan may be yellow, green, red to purple, and may appear spotted. Small (less than 10 cm : 3.9") fish usually a green colour. Ballan never have black spots, tail band, or colours as in other species.



BALLACH BREAC, BALLÁN